

**Don't confuse Airwise, Air Supported Structures with older, heavy fabric, air supported structures**

just because they both rely on air for their structural integrity. Airwise structures are fundamentally different and do not perform the same way.

More traditional heavy fabric structures tended to simulate buildings. They required lights and were not ventilated, and often were not even occupied. Environeta's advanced Airwise structures tend to simulate the outdoors, filled with sunlight and fresh air, exclusive of the wind, rain or snow. These pressure stabilized cable structures are acceptable where air supported structures are not.

**Environeta Solutions Inc.**

Environeta Solutions Inc. is an Alberta company, developing and promoting practical, environmentally responsible solutions to people's problems. Our goal is to combine proven practices with new technologies to allow society to dramatically reduce its impact on our planet, and to provide affordable options to those who demand superior performance. Environeta is a licensed distributor of Airwise Air Supported Structures.



Interior space can be reconfigured for different sports and/or various activities



For more information contact;

Environeta Solutions Inc. #9 105 3rd St. SE, Medicine Hat, Alberta, Canada T1A 0G3  
info@environeta.com – www.environeta.com  
Tel: (403) 800-5096 Cell: (403)-458-4979

**Airwise**  
Air Supported Structures

**The Solution You Need,  
to Bring Field Sports Indoors**

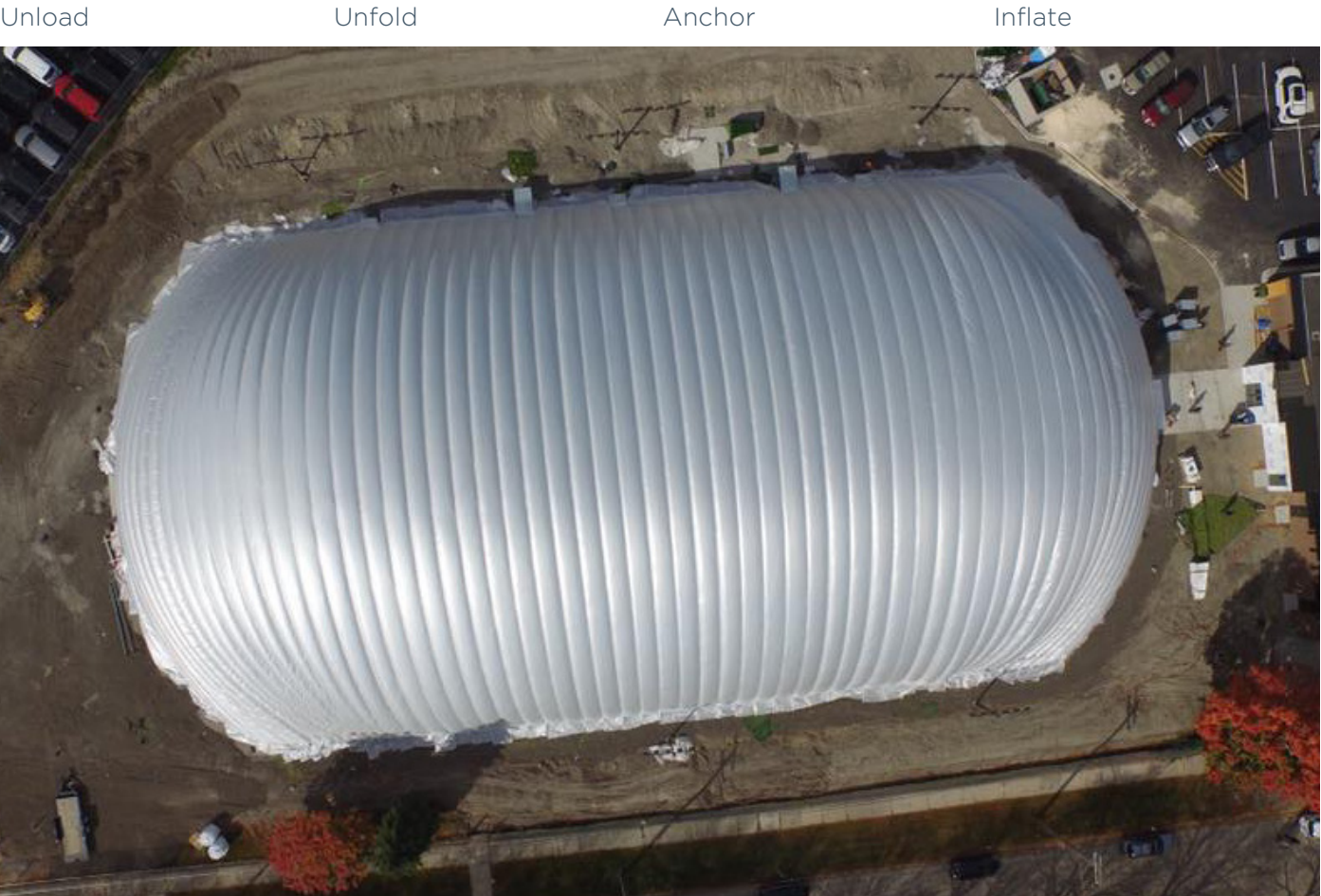
by Environeta Solutions Inc.



**The solution you need is not the invention of new science.**

It was born of a combination of previously proven technologies, drawn from disparate industries. An original mix of applied physics, borrowed from the tire industry, blended with aerospace technology and some useful constituents of traditional, heavy fabric air supported structures, and matured over time into the solution you need. Building upon the original innovation of an R & D engineer at the Goodyear Tire and Rubber Company,

in the early 1970’s, and subsequently pioneered, in the decades following, by Environmental Structures Inc. of Cleveland, Ohio, Environeta Solutions Inc. now offers a unique air supported structure system. A system updated to incorporate new, high tech fabric, materials, formats and controls, to provide a sophisticated yet simple to install and operate solution designed to enclose and control the environment over very large outdoor areas at reasonable cost.



From prepared site to air tight in about 1 day.

**Airwise Air Supported Structures are engineered**

utilizing high strength, load bearing steel cable in concert with light weight, polymerized architectural textile affixed between the cables, to produce an advanced, double walled envelope structure well suited to your needs. The slightly pressurized, interior space of this advanced air supported dome is managed by a purpose built, automated control system. The Airwise automated control system will dynamically maintain internal air pressure, temperature and structure ventilation to reliably ensure the long term integrity and structural stability of your Airwise air supported dome.

**Environeta’s, Airwise, Air Supported Structure System, is comprised of nine principle elements;**

- load bearing cables built into the seams of the cover material
- pressure retaining envelope, film or fabric cover material
- anti lift anchorage system
- ventilation fans
- climate controlling heaters and coolers
- access doors
- vents
- Airwise Automatic Controls
- Automatic, Emergency Generator.



**Environeta’s, Airwise, Air Supported Structure System:**

**lets you Bring Outdoors Indoors**  
Sunlight can be used for lighting and heating and fresh air is used for support and ventilation.

**is the Lowest Capital Cost Option**  
The lowest capital cost of any comparable, large sized, clear span construction.

**has Lower Operating Costs**  
Significantly lower operating costs than equivalent structures, built using more conventional methods; a long term benefit which persists for the lifetime of the structure.

**uses Free Natural Light**  
Utilize ambient natural light to provide effective internal lighting during the daylight hours.

**can make use of Free Solar Heating.**  
Passively accumulates the free heat, generated by solar energy in the winter.

**offers Shorter Time to Completion**  
The cover is prefabricated in one piece and, depending on size, may be erected on a prepared site, in less than a day.

**exhibits Natural Greenhouse Qualities**  
Allows the use of natural turf indoors, if desireable, and landscaping if required.

**has High Ventilation Capacity**  
By its nature the structure system has very high ventilation capability.

**is Wind Resistant**  
Airwise Controls automatically adjust the operating parameters to ensure the structure remains stable even in very high wind conditions.

**has a Clear Span Interior**  
The structure’s interior is clear span, with no columns, providing maximum flexibility in the use of the open interior area.