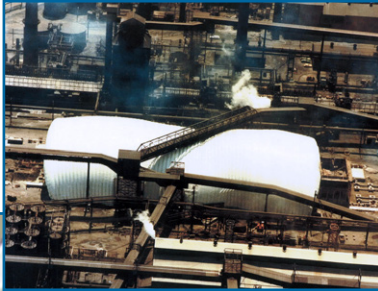
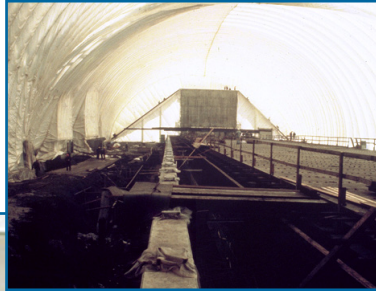


Site Covers for Construction

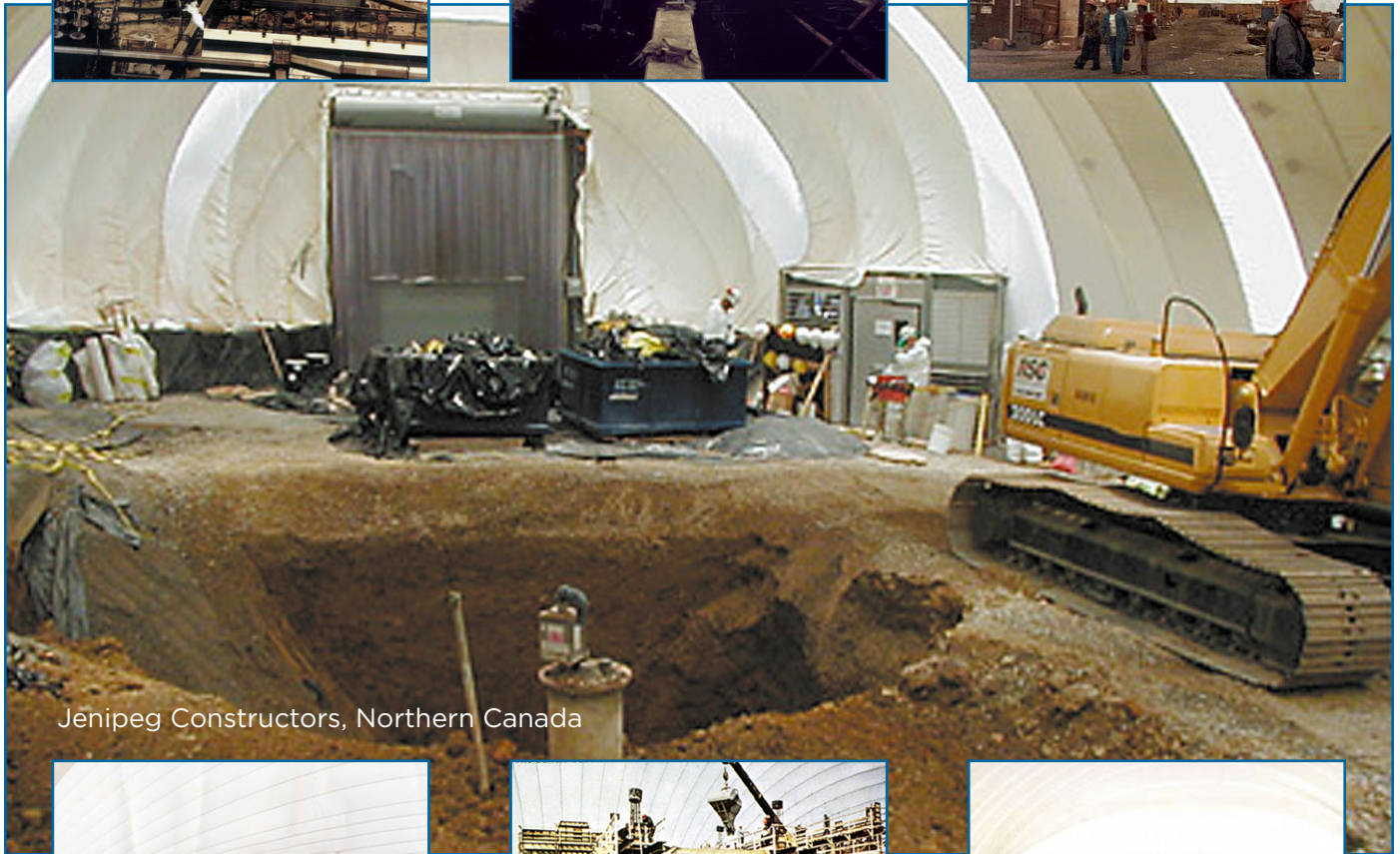
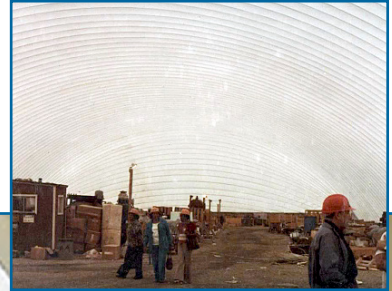
Bethlehem Steel, Maryland



Bethlehem Steel, Interior



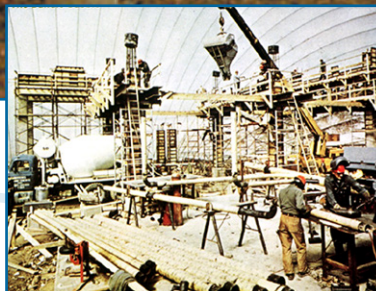
Pennsylvania Power



Jenipeg Constructors, Northern Canada



Chemical Waste Mgmt Inc.



Foster Wheeler, Buffalo



Chemical Waste Mgmt inc.

Temporary or permanent, enclosed, climate controlled environments for construction.

Site Covers for Construction

One of the major applications of Airwise pressure stabilized structures is the encapsulation of an entire construction site to eliminate weather considerations.

Keeping the wind, rain and snow from entering the site and providing a relatively constant temperature with good ventilation and daylight makes an ideal working environment.

It is possible to make the enclosure large enough to store your materials under cover as well, outside storage or a special separate warehouse is not required. This gives two additional advantages: The materials stay nice and dry and clean and theft of materials and tools is curtailed.

Looking at specific examples will show some of the variables that can be included in the operation, providing even more benefits than just weather protection.

One of the first applications was to enclose a site in the Buffalo area in the wintertime to permit construction of a chemical plant.



Figure 1, Buffalo construction site prior to structure being erected.

Figure 1, shows the site before the enclosure has been erected. The ground is covered with snow, water and ice and the enclosure is seen accordion folded on the platform in preparation for deployment.

Figure 2, shows the structure erected. Notice the people at the lower left side of the picture, which will illustrate the relative size of the facility.



Figure 2, Exterior view of temporary dome sheltering entire work site

The next view, Fig. 3, shows the interior, where all the snow is melted and the inside is bright, warm and dry. Notice the coat rack.



Figure 3, Dry, climate controlled, interior working environment.

In this particular application there was the possibility of a poison gas leak at the site. This gas would be heavier than air, so it would run along the

ground. The fan inlets therefore, were located about 10' above the ground to be sure clean air would enter the enclosure.

Since the enclosure is under a slight positive pressure, all leaks are outward and there is no infiltration. This became the "safe haven" for the site, where everyone would go in the event of a poison gas leak.

This is just an additional benefit of this type of construction. With the proper inlet filters it can become a "safe haven" from local contaminants or terrorist attacks.

The usual benefits of use on any construction site is the daylight shadow-free interior, as well as, the fact that one is free of wind, rain or snow, regardless of the ambient weather conditions.

The temperature can be set to what is most desirable and the ventilation rate can be provided so that there is no problem from vehicle exhaust or fumes from operations like welding or other manufacturing processes. Large vehicle doors can be provided without the need for airlocks, because the ventilation system can replace any air lost through the large opening.

Airwise Structures Inc.
#9 105 3rd St. SE,
Medicine Hat, AB. T1A 0G3
Tel: 403-458-4979

info@airwisestructures.com
www.airwisestructures.com